

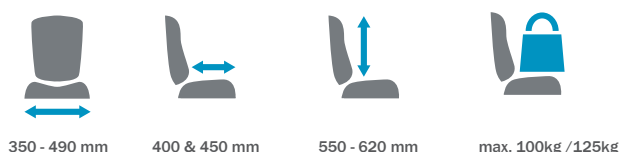


# Heron<sup>TM</sup>





The Heron is a state of the art toilet and bathing seat. It is also now available with power. The simple design and clean appearance conceal multiple functionality features that improve both the user and carer experience.



### Optimum positioning

The Heron is suitable for teenagers and transition to young adults. Change the back height and add a couple of simple accessories to change seat width and seat depth – it is easy to make the Heron fit perfectly!

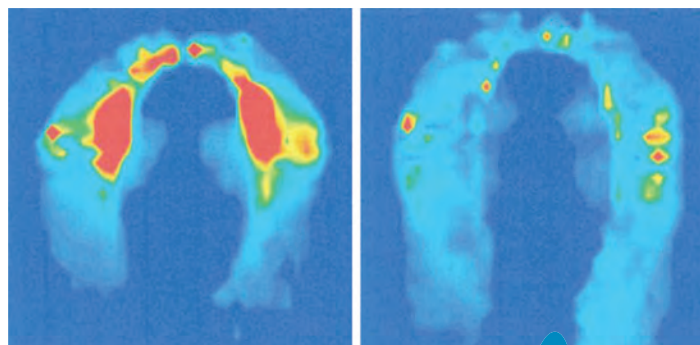


### Perfect working conditions

One of the great features of the Heron is the hydraulic or powered height adjustment which allows you to adjust the chair into the correct position



Heron is available as a hydraulic (100kg) or power version (125kg)



Pressure mapping has been used in the design of Heron to minimise pressure



# Accessories



**Hayla, 21 years old**

'do you like my new hair colour?'



- 1 Head support**  
880508-02
- 2 Upholstery/Shoulder supports**  
880507-04/880508-01
- 3 Side supports,swing-away**  
83xxx-xxx
- 4 Arm rests/Tray**  
880508-03/880508-04
- 5 Hip supports**  
880508-02
- 6 Commode pan**  
880130
- 7 Upholstery**  
101204, back/117005, seat
- 8 Splash guard**  
880508-05
- 9 Splash guard, low**  
880508-07

## Yes - to make it easy

The Heron is available as a hydraulic or power version. Both have the same tilt-in-space and back recline features but, for extra ease and comfort for the carer, we recommend using the power version



10



11



12



13



14



15



**10** Vests & belts  
863451-x

**11** Foot supports, short/long  
880506-03/880506-01

**12** Foot supports, open  
880506-02

**13** Padding for foot supports  
880506-12

**14** Calf support  
880509-01

**15** Heel stops  
880509-02