

**Experts in restorative sleep for patients  
in any setting -  
healthcare facilities or at home**

**Thevo – Therapeutic Beds**

# Thomashilfen Company History

## A healthy goal



Karl Thomas (far left) among his employees

For more than four decades, Thomashilfen has been working towards making people feel better. Our goals are health, well being, and positive development, as well as helping people who suffer from disease or disability. We continuously strive to deliver excellence in care and rehabilitation. Thomashilfen employees are specialists when it comes to support, positioning, and above all, movement and mobility.

It all began with master carpenter Karl Thomas, who set up his own carpentry business in 1935 in Bremervörde in Lower Saxony, Northern Germany (which is also the location of today's THOMAS holding head office). His thriving business, adjoined to the Thomas family home, was disrupted as a result of the political developments at the time and the subsequent wartime events. Between 1940 and 1945, the company came to a complete standstill.

In 1945, Karl Thomas returned from war captivity, resumed his carpentry business and in 1948 he bought a large plot of land in Walkmühlenstraße. Even before the currency reform, he began the first construction stage (400 m<sup>2</sup>) of a facility designed for the mass production of furniture.

## The bed idea ...

In 1955, Karl Thomas and his son Wilfried Thomas, who at the time was a member of the management board of the family business, met a Swiss company that owned a patent for what was to be the basis for the development of a new type of bed. In 1956, envisioning a bed with optimal spring and spinal support, tailored to user's needs and promoting restful sleep, the company introduced their Lattoflex product at the furniture trade fair in Cologne. This was the beginning of the first spring support in the world, that was to change sleep patterns in the West, popularly known as the 'slatted frame'.

Wilfried Thomas and his team further developed and optimized the concept. With its continuously growing international network of specialists, therapists, doctors, scientists and developers, as well as new technologies and materials, today's THOMAS holding of companies is the sleep expert in the international bed market!



Wilfried Thomas

## New directions ...

When the life of Karl Thomas and his wife, who was disabled by illness, underwent significant changes in the 1960s, his personal destiny gave rise to a new company goal. This marked the beginning of Thomashilfen. The furniture manufacturer recognized that the technology of the time provided relief only to a limited extent and more desirable aids were not available on the German market. Through his personal relationships with the Scandinavian countries, Karl Thomas knew that these nations took a leading position in dealing with disability, with regards to both legislation and the manufacture of aids.

Thus, Karl Thomas managed to gain valuable information that allowed him to provide other people with helpful aids and knowledge. And so, partly at the insistence of friends and representatives in public life, gradually a consultation center for disabled people was set up in Bremervörde. Through his many contacts in Scandinavia, Karl Thomas was soon able to found his own company (wholesaler with exclusive distribution rights) that helped improve the lives of disabled people.

In the years that followed, Thomashilfen played a major part in the set-up and establishment of the German rehabilitation market and the formation of the world's largest rehabilitation trade fair, REHACare in Düsseldorf.

At the end of the 1990s, however, Thomashilfen decided to pursue a new direction.

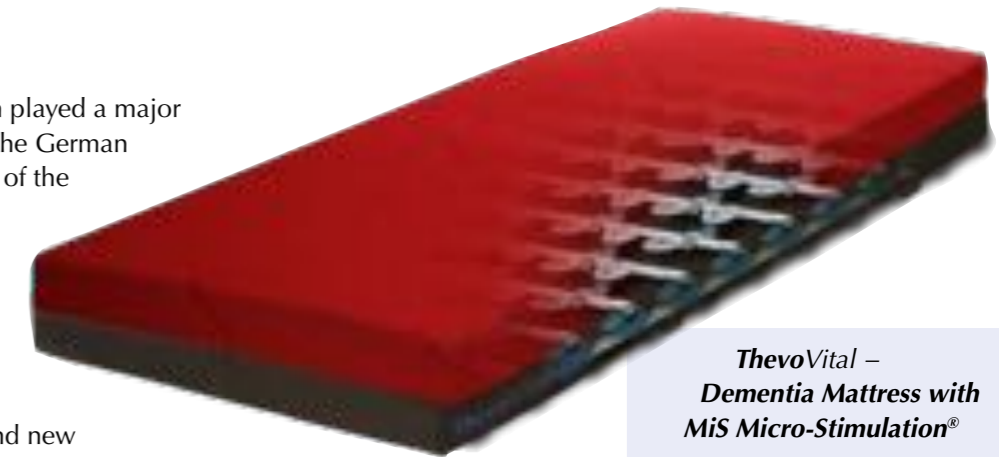
Taking into account the latest scientific findings, changing market conditions and new technologies, the company embraced the opportunity to develop its own innovative products and to market them worldwide.

The main focus was on product benefits for the user, rather than their function itself. The time had come to look at the patient as a person and to promote, support, and ultimately set in motion the process of rehabilitation and healing.

This philosophy is what clearly distinguishes Thomashilfen from most competitors. And so the company succeeded in developing the unique Thevo product family, which is based on the principle of MiS Micro-Stimulation® therapy. Based on the group of companies' unique expertise in the area of sleep, the team of developers at THOMAS managed to develop the innovative Thevo products.

The products automatically convert minor movements, even a patient's breathing motions, into micro size counter movements. This, in turn, stimulates the patient, improves perception of body image, promotes mobility and, ultimately, the healing process.

Thomashilfen attaches particular importance to sleep quality in the development of their Thevo mattresses. Even though very few competitors are seriously committed in this area, healthy sleep is not just a basic human need. Healthy sleep also forms the foundation for successful rehabilitation and healing.



ThevoVital –  
Dementia Mattress with  
MiS Micro-Stimulation®

## Making the impossible possible

For more than 40 years, Thomashilfen has been developing and marketing high-quality and effective products that help people improve their quality of life. So, over the years, Thomashilfen a third generation family business led by owner Gunnar Thomas, has become one of the leading brands in the international rehabilitation market.

A worldwide network of licensed distribution partners in more than 30 countries ensures that Thomashilfen products are supplied quickly, directly, competently, and locally.

In addition, the interdisciplinary team of experts at the THOMAS holding of companies, an alliances of 8 companies, ensures regular knowledge transfer. This provides Thomashilfen with the knowledge, technologies, energy, and vision to make the seemingly impossible possible.



Gunnar Thomas



# Thomashilfen

## Sleep specialist in rehab & care

94.17% less back pain and 96.52% improved quality of sleep. The result of Europe's largest sleep test with more than 75,000 participants. This shows that you can have confidence in the excellent and effective Thevo Therapeutic Beds from Thomashilfen. Organized and conducted by the sleep specialists of the THOMAS holding of companies, experts from all fields collaborated on the newest developments to help people get a healthy, restorative sleep.



### 60 years of experience

ensure our position as an internationally renowned specialist in sleep



### Studies

confirm the positive effect of therapeutic beds



### Research

the in-house "sleep archive" and nursing scientists monitor and record sleep experiences providing the basis of the research



### Technologies

modern fiber composite materials are investigated and implemented in therapeutic beds



### Professional care

believes in therapeutic beds. These recognized care communities are certified on [www.thevo-liste.de](http://www.thevo-liste.de) in Germany.



### All over the world

people rely on our innovation to improve their quality of life

#### 1. [Therapeutic beds]

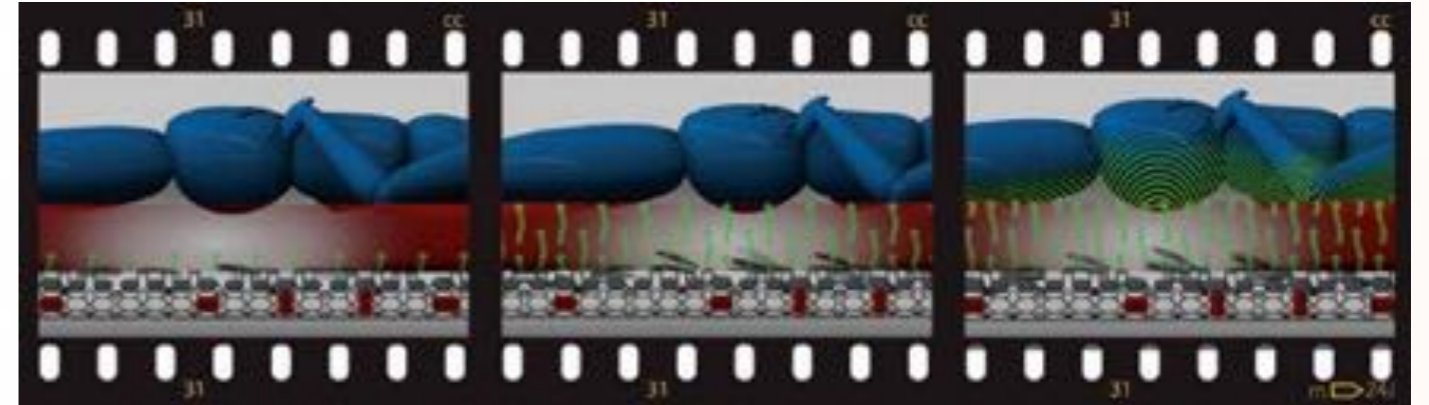
Therapeutic beds, stimulate the body to improve recovery, well-being, and quality of sleep due to their unique, patented constructions.

## All over the world we stand for highest quality!



# Thevo Therapeutic Beds keep your brain fit!

The Thevo Therapeutic Beds automatically convey the slightest movement of the person - even breathing - into micro-sized counter movements. This MiS Micro-Stimulation® provides the patient with improved body perception, promotes blood flow, and supports mobility – keys to restorative sleep. This is especially important for patients with advance age, and those with special needs.

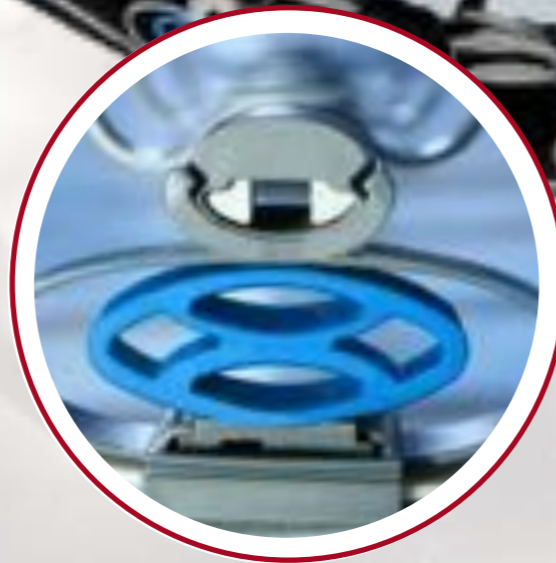


The active principle of MiS Micro-Stimulation®



**World patent**

2938215, 3105827, 2010/001264  
 6718575, 202005011767.6  
 1898750, 11/915192  
 0926970, 103046  
 0733325, 1021881  
 3792729, 6256815



**The mattress cannot do it alone:**

The difference is the suspension framework of the Thevo Therapeutic Bed. The unique technology of the integrated MiS Micro-Stimulation® is the key to better sleep!

**1. [Therapeutic beds]**

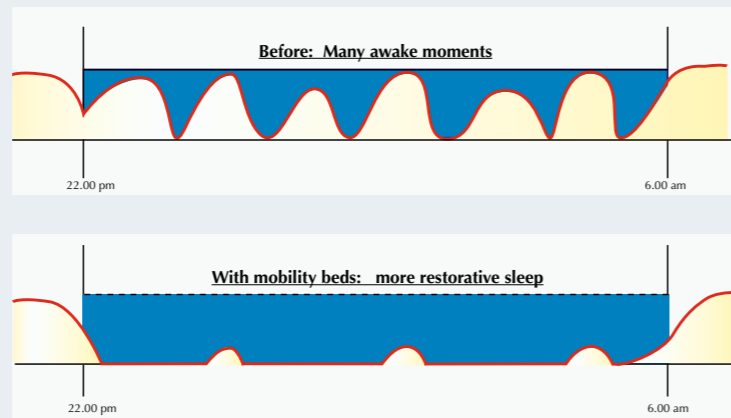
*Therapeutic beds, stimulate the body to improve recovery, well-being, and quality of sleep due to their unique, patented constructions.*

# Breaking the vicious cycle: Finally sleeping through the night – despite dementia

67% of patients with dementia suffer from sleep disturbances affecting both patient and caregivers. Sleep aid medications often become ineffective, and are not a long-term solution.



The Thevo-Effect



*“As her dementia progressed, my wife simply couldn’t rest anymore at night. I was very concerned. I too was getting far too little sleep and reached the end of my rope. Thanks to the dementia care mattress, ThevoVital, we are back to enjoying our days again.”*

**Documented experience reports:**  
Two out of three patients with dementia showed a great improvement in their sleep patterns- [www.thomashilfen.us](http://www.thomashilfen.us)



## Improved sleep with the Dementia Mattress

- ✓ Less night time wandering
- ✓ Less napping during the day
- ✓ Less disorientation
- ✓ Decreased need for sleep aid medications
- ✓ Peace of mind for caregivers

**The report shows results compiled by the IGAP Institute:**  
Approximately two out of three persons with dementia showed an **Improved sleep behavior** **67%** ✓  
Two thirds of persons affected and caregiving staff recommend ThevoVital!

### Wing suspensions

adapt individually to the body zones, MiS Micro-Stimulation® improves body perception



### Mattress

firm density foam provides a secure feeling when lying

**Dementia suspension**  
firm sensation of lying → good orientation

is optimally tailored to the sleep and lying needs of persons with dementia

# Quality of life – despite Parkinson's:

## Spending the day in a relaxed and structured way

The diagnosis often is unexpected, and has an immediate effect on a person's daily life. Besides the muscle tension typical of the illness, extreme fatigue decreases a person's quality of life. Many activities of everyday life become difficult.

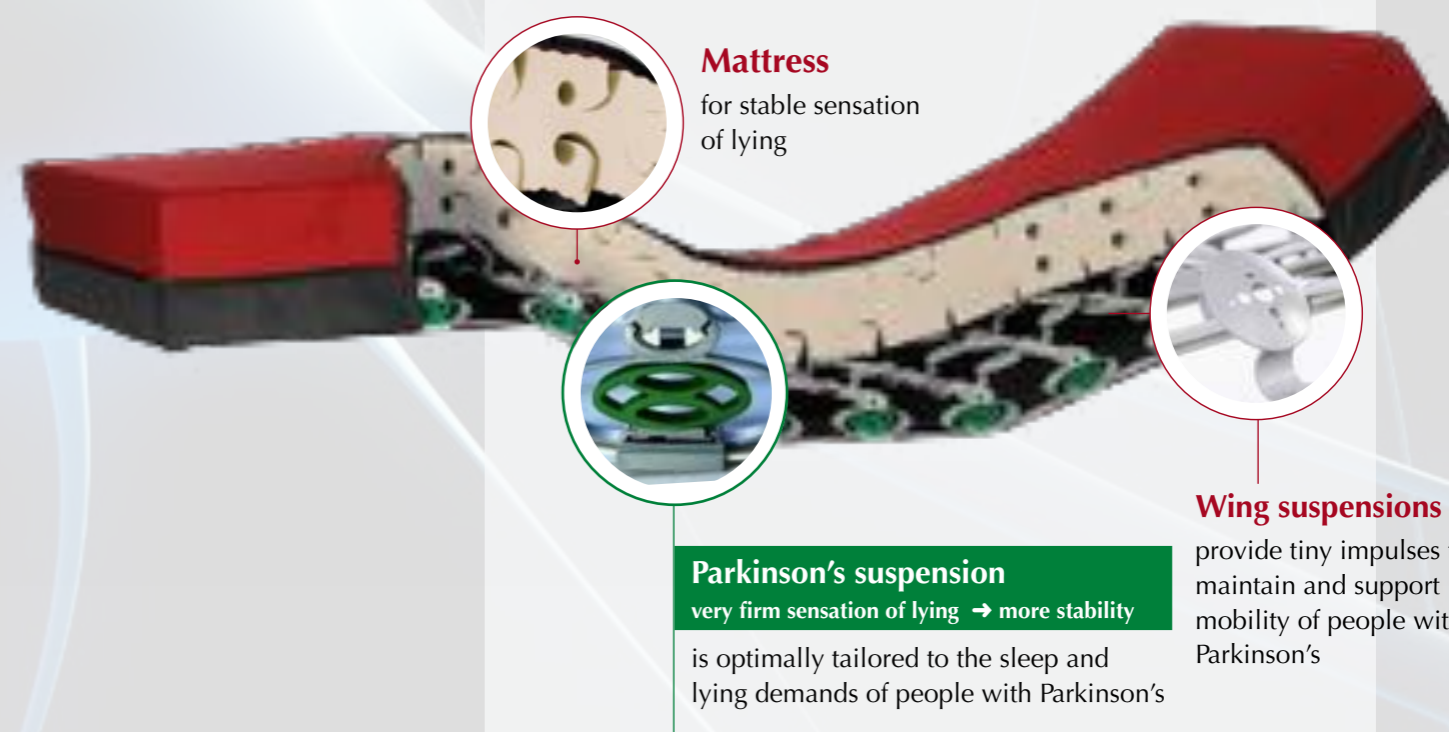


*„Because of my poor sleep at night I was tired the whole day. I could hardly make it through the day. It was awesome for me to discover how relaxing a long, healthy sleep is!*

*And this without needing any additional medication and the associated harmful side effects.”*

## Improved sleep with the Parkinson's Mattress

- ✓ MiS Micro-Stimulation® relaxes muscles
- ✓ Tiny movements maintain mobility
- ✓ Decrease night sweats
- ✓ Easier to sit up and change positions



Documented experience reports:  
[www.thomashilfen.us](http://www.thomashilfen.us)

# Pain Therapy

## Lasting pain relief during the night

A horror story that is repeated every night: After just a few hours, pain becomes rife. Falling back to sleep is out of the question. Awakened in the middle of the night, the person enters a cycle of pain and sleeplessness.

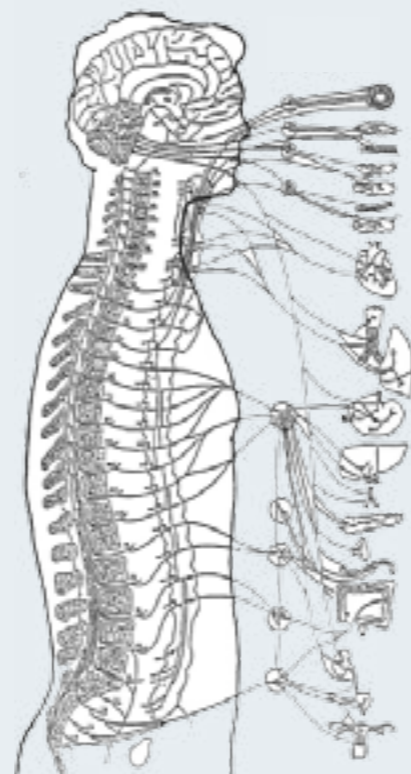


### Fields of application:

No matter what causes the pain

- arthrosis
- osteoporosis
- cancer
- injury

ThevoRelief provides pain-relieving positioning and gentle stimulation of the nerve tracts, the basis for restorative sleep.

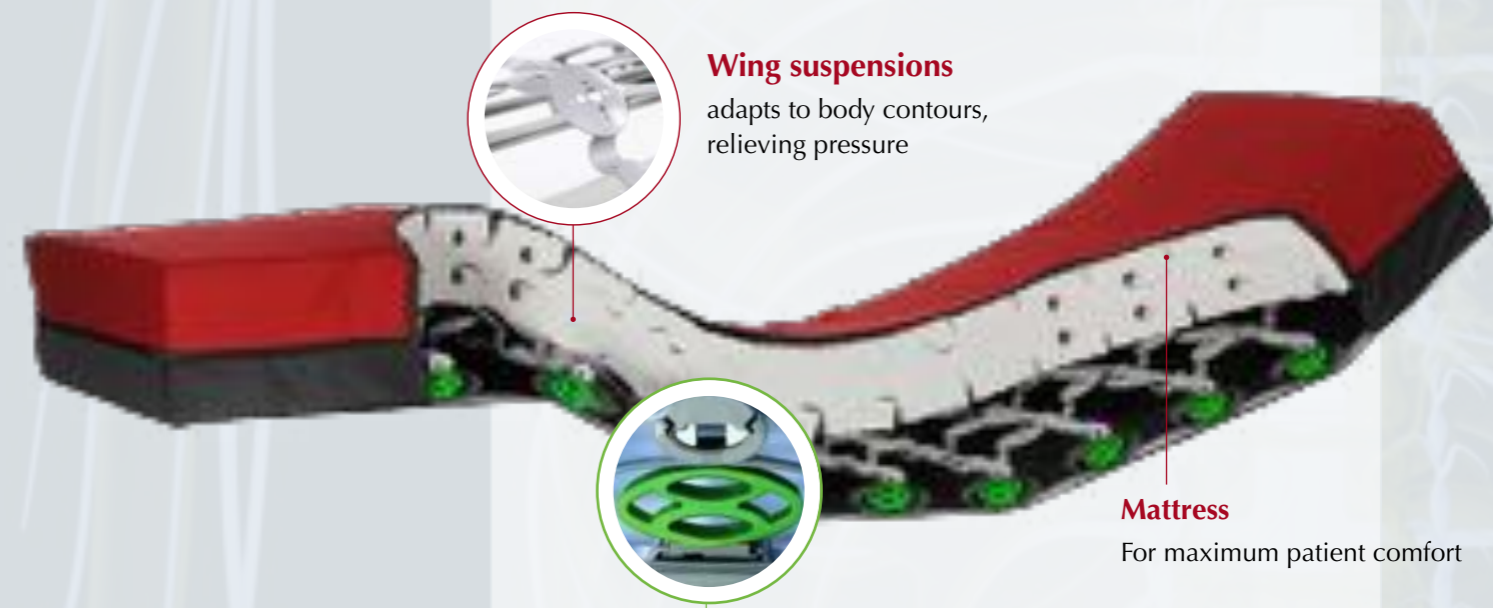


autonomic nervous system

*“The anti-pain mattress, ThevoRelief, supports and soothes my aching body parts and improves my well-being. I sleep longer and better. Finally I am able to bear the pain.”*

## Improved sleep for well-being with the Pain Mattress

- ✓ MiS Micro-Stimulation® gently stimulates the nerve tracts
- ✓ Optimum back support
- ✓ Relieves body aches and painful lying
- ✓ Improved microclimate



**Wing suspensions**  
adapts to body contours, relieving pressure

**Pain suspension**  
very soft sensation of lying → pain relief  
is optimally tailored to the sleep and lying demands of people suffering from pain

**Mattress**  
For maximum patient comfort



# Pressure Ulcer **Mattress**

Many individuals in need of care suffer from pressure ulcers. Conventional positioning systems are either too hard or too soft for the patients, causing skin irritation to develop into pressure ulcers.



Stage 1      Stage 2      Stage 3

*“Actually it is very simple. Besides careful positioning of the patient, the Pressure Ulcer Mattress with MiS Micro-Stimulation® is a good way to prevent pressure ulcers.”*



Proven by studies: [www.thomashilfen.us](http://www.thomashilfen.us)

## Professional care with the Pressure Ulcer Mattress

- ✓ MiS Micro-Stimulation® maintains natural movement
- ✓ Pressure ulcer prevention and treatment (up to and including stage III acc. EPUAP/NPUAP)
- ✓ Pressure-relieving stimulation without electricity
- ✓ Reduced care efforts
- ✓ No maintenance



### Mattress

Special air channels in the mattress layers provide for maximum comfort and optimum ventilation of the skin.



### Wing suspensions

Supports the tiniest movements



### Flexible side element

fits every hospital or twin bed frame

### Pressure ulcer suspension

soft sensation of lying → optimum pressure relief

Optimum pressure relief is specifically tailored for each individual for maximum pressure relief





# Wheelchair User Mattress

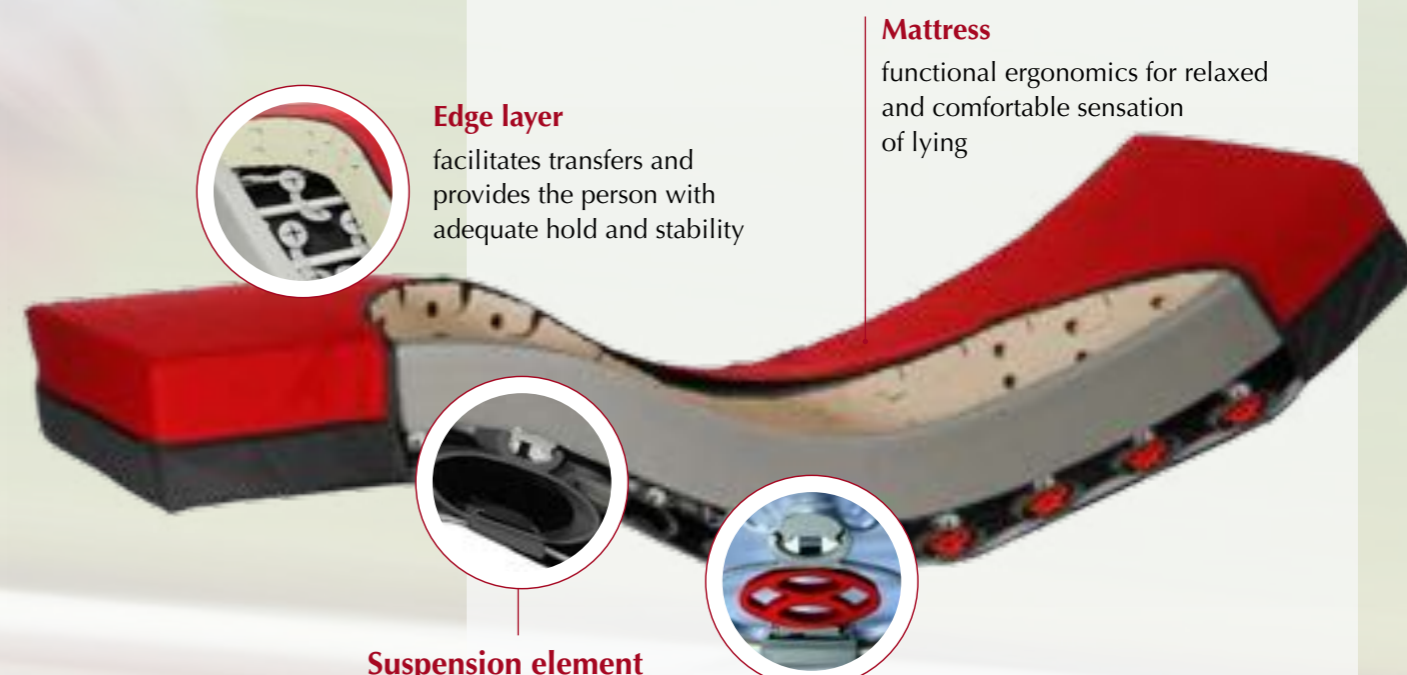
Wheelchair users need a mattress that relieves pressure but still provides a firm base to facilitate transfers. The Wheelchair User Mattress combines both characteristics.



*“Lying in bed for more than a short period of time was painful for me. Now, the Wheelchair User mattress supports my movements with MiS Micro-Stimulation®. I sleep better again and actively start my day.”*

## Improved sleep with the Wheelchair User Mattress

- ✓ Relieves pressure
- ✓ Reduces muscle spasms
- ✓ Adapts to the spinal column
- ✓ Controls pain
- ✓ Eases transfers

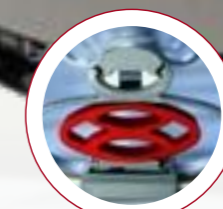


**Edge layer**  
facilitates transfers and provides the person with adequate hold and stability

**Mattress**  
functional ergonomics for relaxed and comfortable sensation of lying



**Suspension element**  
extra soft - pressure relief of the lower part of the body



**Wheelchair user suspension**  
firm sensation of lying → relieves spinal column

relieves the spinal column and is specifically designed for maximum comfort for wheelchair users.

Stimulating



Back-saving



Transfer aid



# Bed time - often a nightmare

Many children with special needs have sleep disorders or disturbances, affecting parents and other family members. These disorders include; issues with falling asleep and staying asleep, restlessness during sleep, as well as disorientation upon awakening. Sleep disorders affect a child's natural growth and development.



*“I was at the end of my rope and burned out emotionally. Nothing really helped. I am so glad that thanks to her SleepingStar my daughter is more refreshed and relaxed.”*



Proven by studies: [www.thomashilfen.us](http://www.thomashilfen.us)



## Improved sleep with the Sensory Support Mattress

- ✓ **MiS Micro-Stimulation® supports mobility**
- ✓ **Improves body perception**
- ✓ **Reduces spasms and pain**
- ✓ **Calms the child for restorative sleep**



**Cover**  
removable and easy to clean for optimal hygiene



**Wing suspensions**  
have a positive influence on the children's restless sleep by providing tiny movement impulses



**Mattress**  
is especially tailored to the needs of children with special needs to provide comfortable sensation of lying

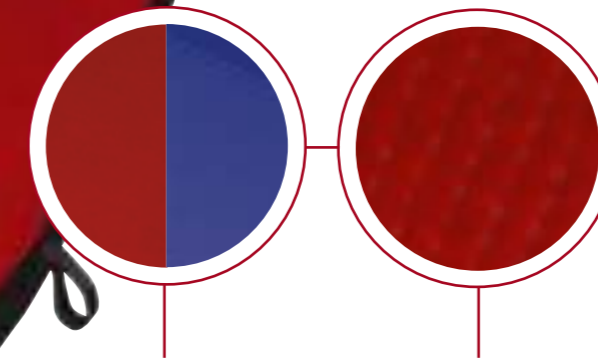
**Positioning suspension**  
soft sensation of lying → extended sleep phases  
is optimally tailored to the sleep and lying requirements of children with special needs

# It is your choice!

Thevo Therapeutic Beds are available with jersey or incontinence covers.

All mattresses sold to the U.S. and Canada fulfill the following standards regarding flammability:

16 CFR 1632, 16 CFR 1633, Cal. TB 129/ ASTM E 1590, BFD IX-11



**Features:**  
**Incontinence cover**

- breathable
- clean easily by wiping with disinfectant
- blue color only for **ThevoSleepingStar**

**Features: Jersey cover**

- breathable microclimate
- only for Thevo Therapeutic Beds for adults

**Shared features:**

- sewn zipper
- washable at 65°C / 149°F
- tumble dry
- autoclavable
- suitable for re-use

## Sizes: Thevo Therapeutic Beds for adults

- **ThevoVital** • **ThevoCalm** • **ThevoRelief** • **ThevoFlex** • **ThevoautoActiv**

Available from a width of 80 to 160 cm\* / 31.5 to 63" and a length of 180 to 220 cm / 70.9 to 86.6".

**Questions? Contact us, we are happy to help!**

Toll free: 866.870.2122  
E-Mail: [info@thomashilfen.com](mailto:info@thomashilfen.com)  
[www.thomashilfen.us](http://www.thomashilfen.us)



## Sizes: Thevo Therapeutic Bed for children

- **ThevoSleepingStar**

Available from a width of 60 to 137 cm / 23.6 to 54" and a length of 120 to 220 cm / 47.2 to 86.6".

**Questions? Contact us, we are happy to help!**

Toll free: 866.870.2122  
E-Mail: [info@thomashilfen.com](mailto:info@thomashilfen.com)  
[www.thomashilfen.us](http://www.thomashilfen.us)



# Thevo Product Matrix

Product name and maximum weight of the person	Underframe		Characteristics of underframe suspension						Characteristics of side elements				Mattress type + characteristics							
			Suspension element		Suspension block				spring limiter	rubber block	bellows	adapter profile	1	2	3	4	5	6	integrated spring	firm edge layer
	with	w/o	medium	soft	firm	medium	soft													
ThevoVital 80 kg / 176,4 lbs	X		X		X							X			X					
ThevoVital 140 kg / 308,6 lbs	X		X		X							X				X				
ThevoCalm 80 kg / 176,4 lbs	X		X			X			X			X			X					
ThevoCalm 140 kg / 308,6 lbs	X		X			X			X			X				X				
ThevoRelief 50 kg / 110,2 lbs	X			X			X					X	X							
ThevoRelief 100 kg / 220,5 lbs	X			X			X					X		X						
ThevoRelief 135 kg / 297,6 lbs	X			X			X					X			X					
ThevoautoActiv 50 kg / 110,2 lbs	X			X		X			X			X	X							
ThevoautoActiv 100 kg / 220,5 lbs	X		X			X			X			X		X						
ThevoautoActiv 135 kg / 297,6 lbs	X		X			X			X			X			X					
ThevoActiv 50 kg / 110,2 lbs	X									X	X		X							
ThevoFlex 80 kg / 176,4 lbs	X			X	X*							X		X						X
ThevoFlex 140 kg / 308,6 lbs	X			X	X*							X			X					X
ThevoSleepingStar 60 kg / 123,3 lbs	X			X			X		X			X	X							

\* Suspension blocks are used in the area of the upper body only to optimize mobility.  
 Different arrangements of the spring limiters provide optimum lying comfort to meet the specific requirements of clinical pictures related to the products



7936 Occidental Ave S  
Seattle · WA 98108  
Phone: 206 763 0754 · Toll free: 866.870.2122  
[www.thomashilfen.us](http://www.thomashilfen.us)